

Detached House in Gai | Andreas Kanzian
Gai | Austria | 2008



© Walter Lutzenberger

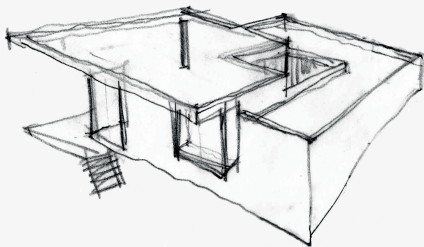
Friday
Freitag
Vendredi

05|07

Detached House in Gai | Andreas Kanzian

Gai | Austria | 2008

Being the last property located in an existing settlement structure there are unrestricted views on two sides which open up from this approx. 150 m² house towards the vastness of the surrounding mountain landscape. The flat-roofed house has been designed at ground level, with its relationship between space and function orientated towards the individual requirements and needs of the building owner who is a wheelchair user. This demand on use is the reason for the orientation of the building towards the open countryside, with the alpine mountainside being integrated to form part of the unique living experience. All rooms are arranged around an intimate atrium, which is located in the centre of the building and designed as a protected, exterior room that is not visible from the outside and also serves for light and ventilation purposes. The room-high windows and door units have been provided with special darkened glass panes. The entirety of the equipment and facilities is geared to the special needs of people with mobility impairments.



haus h.r. 07.04